

GPS Mount 3



Made of high-quality aluminium CNC machined. The windscreen can still be used in all positions. For Garmin SP26**, 2720, Zumo 550, Zumo 590, Zumo 595, Zumo 660, Zumo XT, Zumo XT2, Nüvi & Garmin Quest GPS. No drilling is required. SP26** & 2720 owners will need to purchase the Garmin Motorcycle Mount, available from: Global Positioning Systems. Garmin Quest requires Garmin Part:#010-10610-00. Allows full range of adjustment of the BMW R1200RT screen. Colour: Anodised Matt Black. Weight: 200g

For R1200RT MY 2005 - 2009

Also referred to as GPS mount, GPS bracket.

Art-Nr.: 44001

89,90 EUR

GPS Mount 3

Art-Nr.: Zumo-Ad

16,90 EUR

This adapter is made for all Garmin SPIII, SP26**, 2720 & Zumo (not for ZUMO 340, 345, 350, 390 and 395). With this adapter the GPS is 12mm closer to you and it can be dislocated 7,5mm or 15mm higher or lower as usual. You need this option for the Zumo's bus bar.

Made of black Pom incl. all screws.

Art-Nr.: tomt-Ad Ed 2

18,90 EUR

Adapter for TomTom 2nd Edition/Urban Rider Pro/TomTom 2013 LM, TomTom 400, 410, 420, 450, 500 & 550

Incl. screws for mounting in the GPS mount and the TomTom holder.

Art-Nr.: Zumo-Ad schraeg

16,90 EUR

Adapter angular for Garmin Zumo (not for ZUMO 340, 345, 350, 390 and 395)

Art-Nr.: ZumoAd340-350

22,90 EUR

Adapter ZUMO 340, 345, 346, 350, 390, 395 & 396

Art-Nr.: ram-1zoll

49,90 EUR

Adapter for 1" RAM ball

Additional pictures:



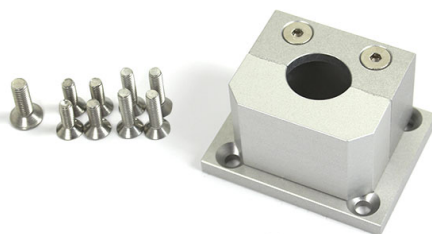
Zumo-Ad



tomt-Ad Ed 2



Zumo-Ad schraeg



ram-1zoll



ZumoAd340-350