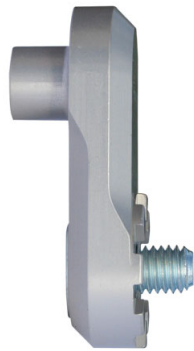


Vario Plate (Adapter)



The Vario plate (adapter) is the part between the footpeg and the Vario footrest system (joint).
You can see the complete footpeg lowering on pictures 2, 3 and 4.
You need these 3 items! You can see matching footpegs and Vario footrest systems (joints) below.
You cannot use the original footrest.

The Vario plate (adapter) is silver anodized and available in 3 lengths: 23 mm, 30 mm and 50 mm.
We recommend 50 mm only for the pillion rider.
Delivery: 1 set (for left and right).

Art-Nr.: 051 00 00 23	51,90 EUR
------------------------------	------------------

23 mm Vario Plate (for left and right)

Art-Nr.: 051 00 00 30	51,90 EUR
------------------------------	------------------

30 mm Vario Plate (for left and right)

Art-Nr.: 051 00 00 50	53,90 EUR
------------------------------	------------------

50 mm Vario Plate (for left and right)

Not allowed for the driver!

Art-Nr.: 051000023-8	51,90 EUR
-----------------------------	------------------

23 mm Vario Plate black (for left and right)

Art-Nr.: 051000030-8	51,90 EUR
-----------------------------	------------------

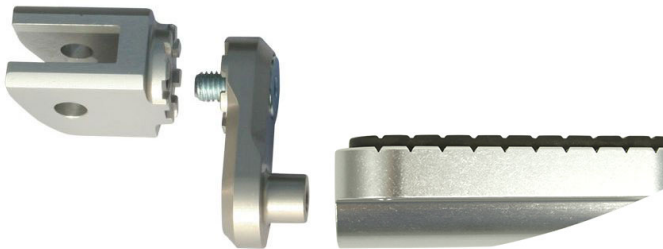
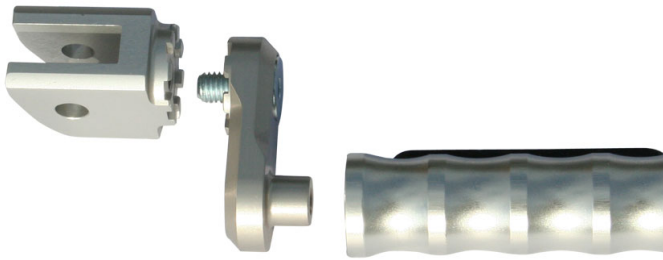
30 mm Vario Plate black (for left and right)

Art-Nr.: 051000050-8	53,90 EUR
-----------------------------	------------------

50 mm Vario Plate black (for left and right)

Not allowed for the driver!

Additional pictures:



051 00 00 23



051 00 00 30



051 00 00 50



051000023-8



051000030-8

051000050-8

