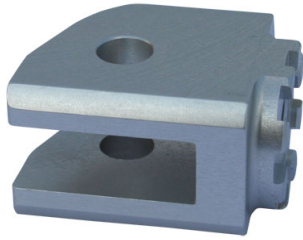


Driver Vario Footrest System



The Vario footrest system (joint) will be mounted to the motorcycle like the original footpeg. The Vario plate (adapter) will be mounted to the joint and the footpeg will be mounted to the Vario plate. You can only use our Super Grip footrest, our Racing footrest or our Multi Grip footrest. You cannot use the original footrest. You can fix the Vario plate every 45 degree. For a better understanding you can see the complete footpeg lowering on pictures 2, 3 and 4 (all three parts must be ordered separately!). The joint is silver anodized with EU homologation.

Fits for:

BMW F650GS 08-*

BMW F800GS

BMW R850GS

BMW R1100GS 94-*

BMW R1150GS 99-03

BMW R1150GS Adventure

BMW R1200GS 04-12

Delivery: 1 set.

Art-Nr.: 051 02 04 00

47,90 EUR

Driver Vario Footrest System (for left and right)

Additional pictures:

